

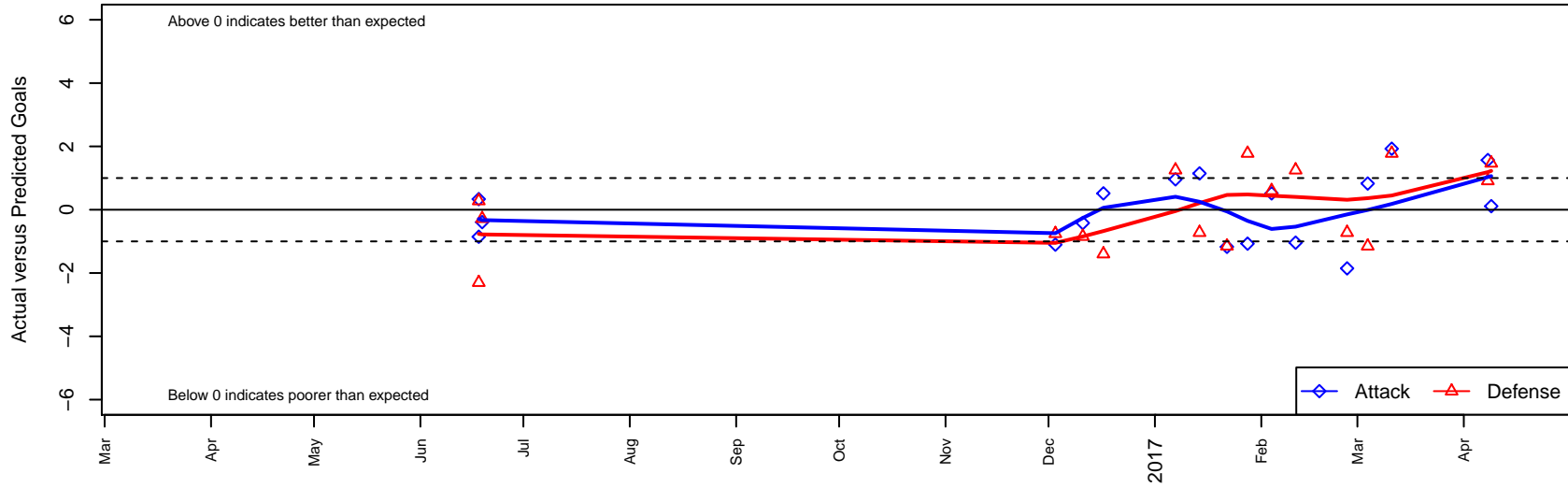
# Seattle United Shoreline Blue G01

Seattle United Regional  
 Seattle, WA  
 G01 total strength=1358  
 attack=8.64 defense=5.54  
 spr league = Win NPSL Div 2 (00) U17

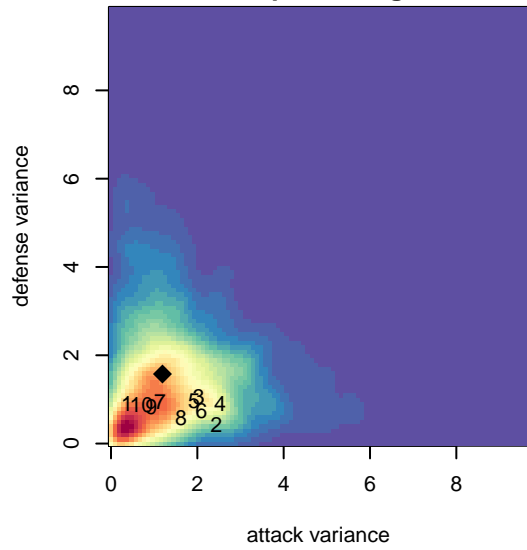
alt names used:  
 Seattle United Shoreline Blue G01  
 Seattle United G01 Shoreline Blue

Venues played:  
 2016 Snohomish United Invit GU16  
 2016 Win NPSL Division 2 (00) U17  
 2016 WYS Presidents Cup G01 Division 2

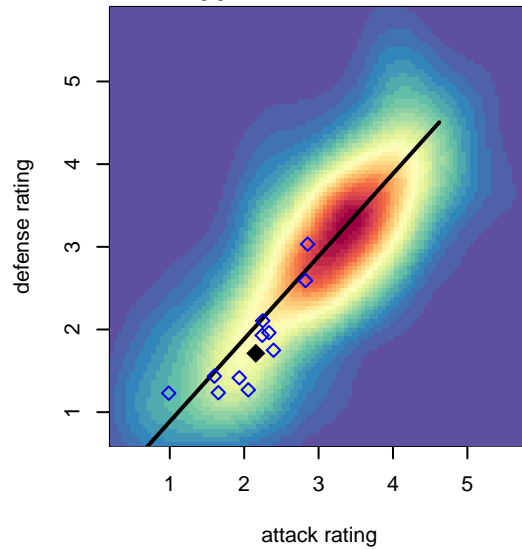
**Seattle United Shoreline Blue G01**  
 Dots are actual minus expected GF (blue circles) and GA (red triangles).  
 Blue line is smoothed change in attack strength. Red is smoothed change in defense strength.



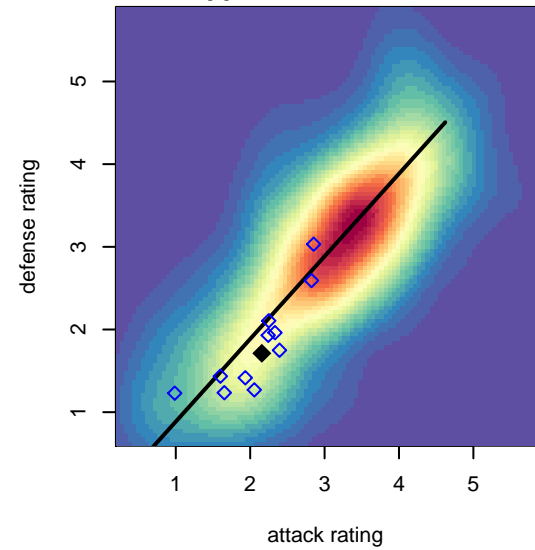
**attack and defense variance (black dot)  
relative to other teams  
and top 10 in region**



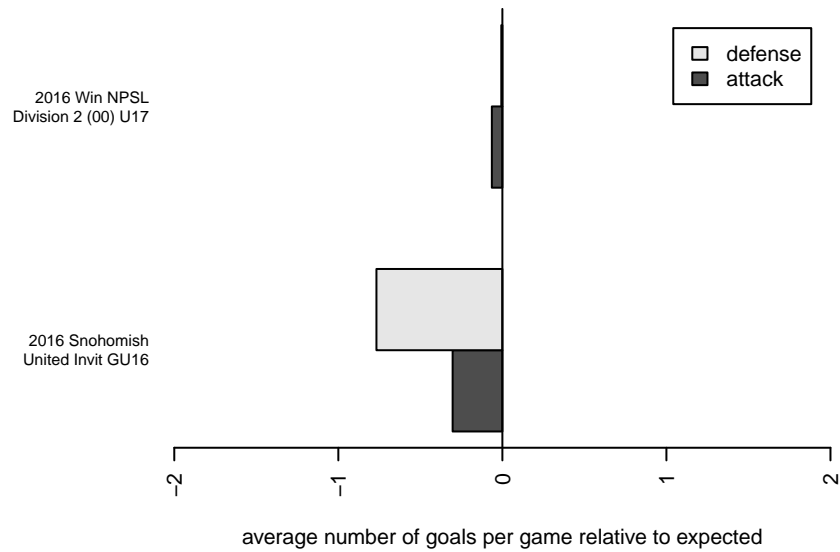
**attack and defense rating  
relative to others at age  
and all opponents in last 13 months**



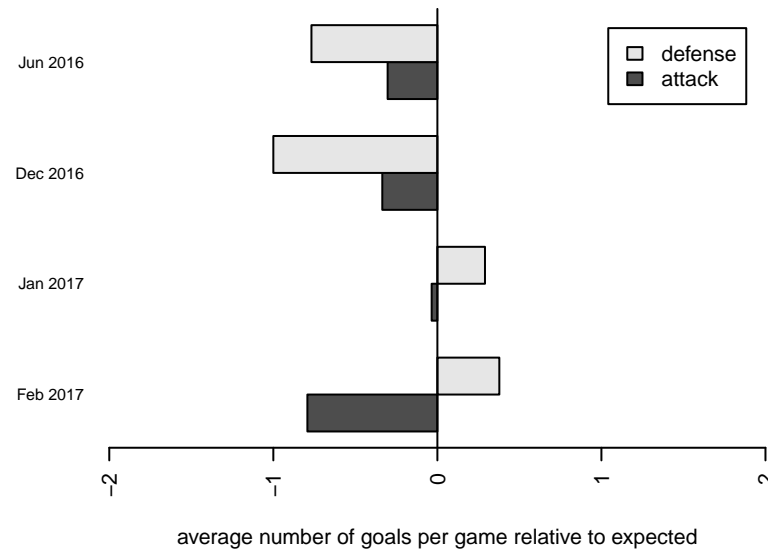
**attack and defense rating  
relative to others at age  
and all opponents in last 13 months**



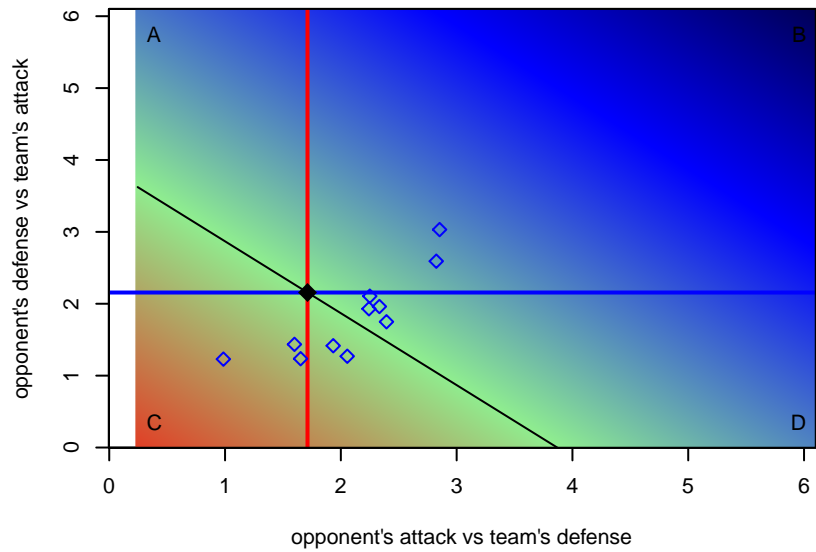
**Performance relative to 13 month average**



**Performance relative to 13 month average**



Distribution of opponents  
 Red = Lose zone, Blue = Win zone, Green = Even  
 Black line separates win/lose zones



lot. A=Neither has attack advantage, B=Opponent has both attack and defense advantage, C=Opponent has both attack and defense disadvantage, D=Both have

<b>date</b>	<b>home</b>		<b>away</b>		<b>venue</b>	<b>pred.home</b>	<b>pred.away</b>
2017-04-09	Seattle United Shoreline Blue G01	1	Whatcom FC Rangers Blue G01	1	2016 WYS Presidents Cup G01 Division 2	0.89	2.47
2017-04-08	Seattle United Shoreline Blue G01	4	Bellevue United Lee G01	0	2016 WYS Presidents Cup G01 Division 2	2.43	0.91
2017-03-11	Seattle United Shoreline Blue G01	4	Seattle United NE Blue G01	0	2016 Win NPSL Division 2 (00) U17	2.07	1.78
2017-03-04	Seattle United S Blue G01	3	Seattle United Shoreline Blue G01	2	2016 Win NPSL Division 2 (00) U17	1.85	1.17
2017-02-26	Kent United White G01	2	Seattle United Shoreline Blue G01	0	2016 Win NPSL Division 2 (00) U17	1.28	1.85
2017-02-11	Seattle United Shoreline Blue G01	1	Lake Hills Extreme G01	0	2016 Win NPSL Division 2 (00) U17	2.04	1.25
2017-02-04	Bellevue United Cushing G00	0	Seattle United Shoreline Blue G01	3	2016 Win NPSL Division 2 (00) U17	0.60	2.48
2017-01-28	Seattle United NE Blue G01	0	Seattle United Shoreline Blue G01	1	2016 Win NPSL Division 2 (00) U17	1.78	2.07
2017-01-22	Seattle United Shoreline Blue G01	0	Seattle United S Blue G01	3	2016 Win NPSL Division 2 (00) U17	1.17	1.85
2017-01-14	Seattle United Shoreline Blue G01	3	Kent United White G01	2	2016 Win NPSL Division 2 (00) U17	1.85	1.28
2017-01-07	Lake Hills Extreme G01	0	Seattle United Shoreline Blue G01	3	2016 Win NPSL Division 2 (00) U17	1.25	2.04
2016-12-17	Seattle United Shoreline Blue G01	3	Bellevue United Cushing G00	2	2016 Win NPSL Division 2 (00) U17	2.48	0.60
2016-12-11	Seattle United Shoreline Blue G01	1	NW United Red G00	3	2016 Win NPSL Division 2 (00) U17	1.42	2.15
2016-12-03	BIFC White G01	3	Seattle United Shoreline Blue G01	0	2016 Win NPSL Division 2 (00) U17	2.24	1.10
2016-06-19	Snohomish United Black G02	4	Seattle United Shoreline Blue G01	0	2016 Snohomish United Invit GU16	3.72	0.39
2016-06-18	Snohomish United Black G01	6	Seattle United Shoreline Blue G01	1	2016 Snohomish United Invit GU16	3.70	0.66
2016-06-18	Kent United White G01	1	Seattle United Shoreline Blue G01	1	2016 Snohomish United Invit GU16	1.28	1.85